



ASY Electronics (Jiaxing) Co., Ltd

Business inquiries: +86 181 5734 3325

E-mail: sales@king-sen.com Website: www.asyjx.com

Address: Room 302, Building 11, No. 79 Jinsui Road, Economic and Technological Development Zone, Jiaxing , Zhejiang P.R. China

Active strap wireless temperature sensor KL-DS30YS Manual





ASY Electronics (Jiaxing) Co., Ltd

Business inquiries: +86 181 5734 3325

E-mail: sales@king-sen.com Website: www.asyjx.com

Address: Room 302, Building 11, No. 79 Jinsui Road, Economic and Technological Development Zone, Jiaxing , Zhejiang P.R. China

Table of contents

I. Product overview	1
II. Structure of wireless temperature measurement system	2
2.1 Wireless temperature measurement system structure diagram....	2
2.2 Schematic diagram of wireless temperature 2	2
2.3 Function introduction	3
III. Main technical parameters	3
IV. Installation site case	4
V. Contact us	5



ASY Electronics (Jiaxing) Co., Ltd

Business inquiries: +86 181 5734 3325

E-mail: sales@king-sen.com Website: www.asyjx.com

Address: Room 302, Building 11, No. 79 Jinsui Road, Economic and Technological Development Zone, Jiaxing, Zhejiang P.R. China

I、 Product overview

The KL-DS30YS wireless temperature sensor is a high-precision, low-power temperature sensor with wireless transmission capabilities. It consists of a temperature sensor, signal modulation and amplification device, logic control circuit, wireless communication circuit, lithium battery, and antenna. The sensor uses ultra-low-power wireless communication to transmit the collected temperature data to the wireless temperature measurement host via a wireless network.

This temperature sensor is equipped with a temperature probe and is suitable for single-channel temperature detection. It features a strap-type mounting design, allowing direct installation on the surface of the object being measured, making it easy to install and secure.

This temperature sensor is mainly used to measure the temperature of the surface or contact points of high-voltage energized objects, such as the operating temperature of industrial production equipment, high-power motors, exposed contacts in high-voltage switchgear, busbar connections, outdoor disconnectors, and transformers.



ASY Electronics (Jiaxing) Co., Ltd

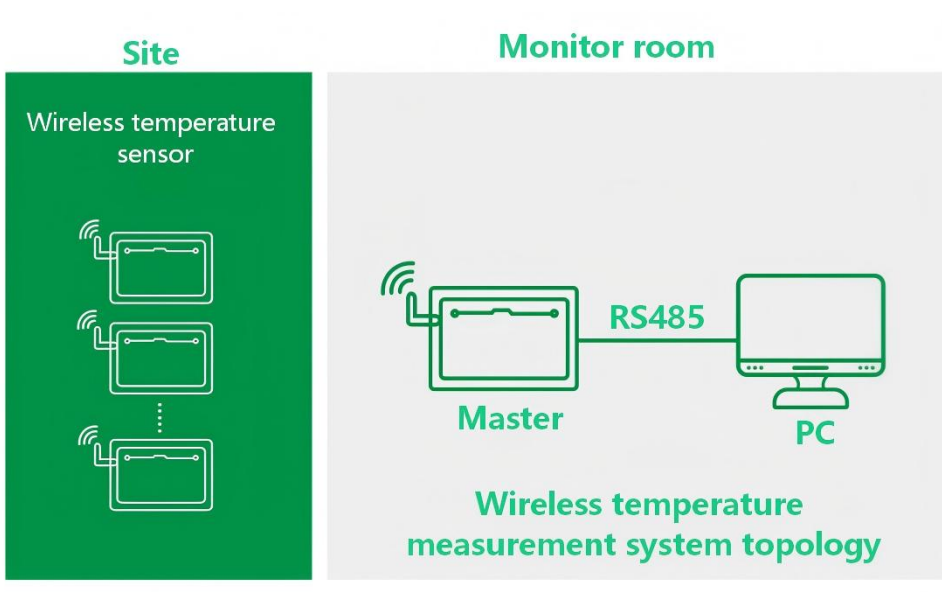
Business inquiries: +86 181 5734 3325

E-mail: sales@king-sen.com Website: www.asyjx.com

Address: Room 302, Building 11, No. 79 Jinsui Road, Economic and Technological Development Zone, Jiaxing, Zhejiang P.R. China

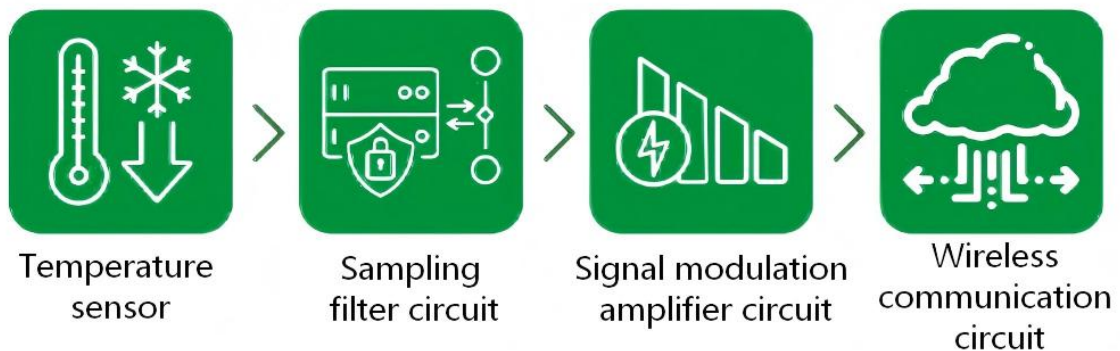
II、 Wireless temperature measurement system structure

2.1 Wireless temperature measurement system structure diagram



2.2 Schematic diagram of wireless temperature sensor

Principle and structure of wireless temperature measurement sensor





2.3 Function introduction

Main functions	Function Introduction
Temperature detection function	Real-time detection of the current temperature of the measured part
Battery voltage self-test function	Real-time detection of the internal battery voltage value of the sensor
Note: All data detected by the sensors are uploaded to the wireless temperature measurement host via wireless transmission.	

III、Main technical parameters

Temperature measurement range	-40 ~ +200°C
Measurement accuracy	±1°C
Temperature sampling frequency	Default 10 seconds
Communication methods	FSK
wireless frequency	433MHz
Wireless transmission	≤300 meters (open space)



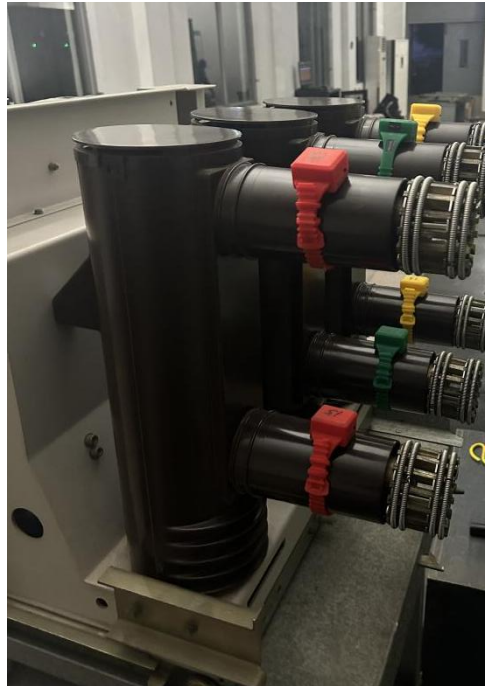
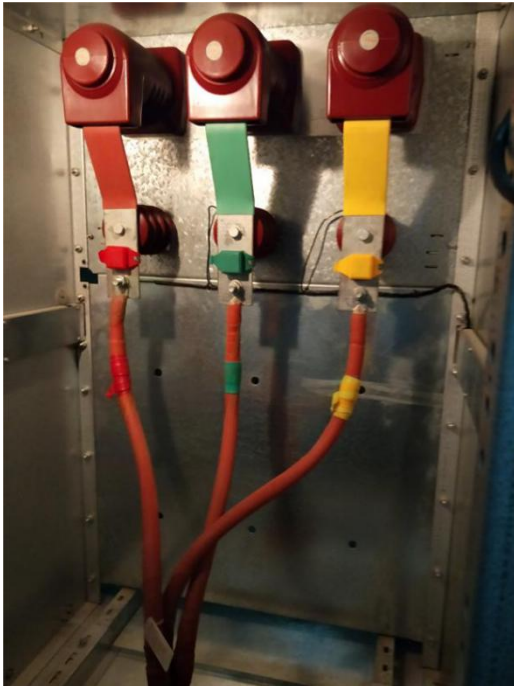
Business inquiries: +86 181 5734 3325

E-mail: sales@king-sen.com Website: www.asyjx.com

Address: Room 302, Building 11, No. 79 Jinsui Road, Economic and Technological Development Zone, Jiaxing, Zhejiang P.R. China

distance	
Battery lifespan	5-8 years
Installation method	Bundled
Total length of watch strap	385mm
External dimensions	38mm*35mm*24mm
Installation location	Removable high-voltage switchgear: busbars, stationary contacts, cable connections, etc. Fixed high-voltage switchgear: busbars, isolating switches, cable connections, etc.

IV、 Installation site case





ASY Electronics (Jiaxing) Co., Ltd

Business inquiries: +86 181 5734 3325

E-mail: sales@king-sen.com Website: www.asyjx.com

Address: Room 302, Building 11, No. 79 Jinsui Road, Economic and Technological Development Zone, Jiaxing , Zhejiang P.R. China

V、Contact us



Business Phone: 18157343325 Lila Xu

Technical Phone: 18057302496 Wailly Yang

E-mail: sales@king-sen.com

Office website: www.asyjx.com

Address: Room 302, Building 11, No. 79 Jinsui Road,
Economic and Technological Development Zone,
Jiaxing , Zhejiang P.R. China

*This information product images and technical data is for reference only, if subject to update without prior notice, the specific content of the right to interpret ASY Electronics (Jiaxing) Co., Ltd.